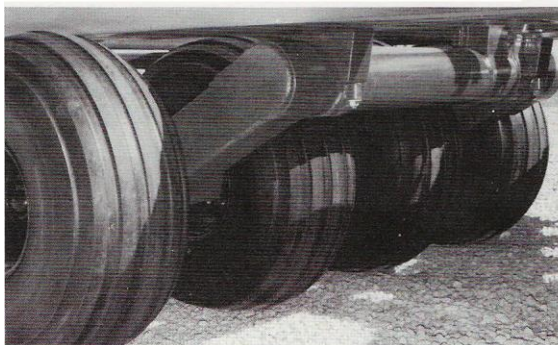
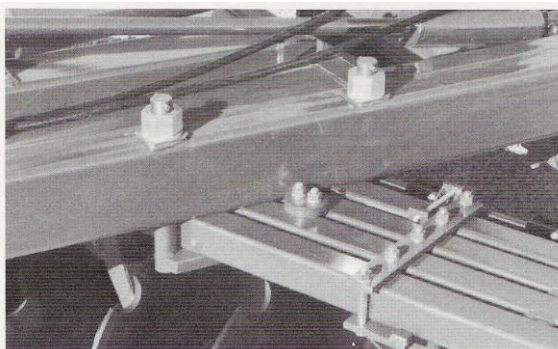


Miller Series III Offset Discs

MANUFACTURED BY
K&M MFG. CO., INC.
TAYLOR, TX 76574
512-352-2588



Four 16L x 16.1 tires provide excellent flotation, easy rolling.



Quadruple section tubes are held by a double-pin system.

The Miller Series III Extra Heavy Duty:

A super-rugged machine for extra heavy usage. Ideal for difficult discing, deep plowing, ground breaking and other jobs requiring maximum strength. To withstand stress, all frame, axle and hitch tubing is 3/8" wall thickness. Quadruple section tubes are used, and these are internally tube-reinforced and held to the frame in a new extra-strong clamping system. The section shafts are heat treated steel, bearings are 216 series triple-sealed and mounted in all-steel spools. Shaft bearings are outside the end blades on both sections and the sections are equipped with Series III spring-loaded scrapers. The Miller Series III axle control hydraulic cylinder has built-in depth and locking functions. A hydraulic leveling device permits on-the-move control so the Miller Series III may be readily adjusted to handle changing discing conditions and to provide sideways control on hillsides. The Series III Extra Heavy Duty model should be used when extra weight is needed. Each foot of cutting width carries more than 1,000 lbs. of machine weight! Available with 32" or 36" diameter notched blades.

Series III

Model 3700 Extra Heavy Duty

Standard Equipment Includes:

Triple-sealed 216 series section ball bearings, heavy duty hubs with 8-bolt wheels, 16L x 16.1 tires, axle control cylinder, hydraulic leveling control, hydraulic hoses, scrapers, adjustment wrench, 2" section shafts.

Blade Spacing 12" front x 13 3/4" rear

Blade Options Available
33 ONLY

Blade Spacing 13 3/4" front x 16" rear

Blade Options Available
34 ONLY

Series III Rigid

Model Number	Cutting Width	Blade	Approx. Wt. (Lbs.)	Model Number	Cutting Width	Blade	Approx. Wt.
3700-240	10'10"	22	12,980	3700-350	11'5"	20	14,320
3700-340	11'9"	24	13,510	3700-450	12'5"	22	15,260
3700-440	12'9"	26	14,040	3700-550	14'7"	26	16,702
3700-540	14'7"	30	15,400	3700-650	16'9"	29	18,276
3700-640	16'5"	33	16,660	3700-750	17'10"	31	19,823
3700-740	18'3"	37	17,660	3700-850	20'0"	35	22,980
3700-840	20'2"	41	19,920				

Any piece of machinery can be built to custom specifications, i.e.: Blade spacings, blade options.

MANUFACTURED BY
K&M MFG. CO., INC.
TAYLOR, TX 76574
512-352-2588

Printed in U.S.A.
LS 1287